



**Royal South Australian Deaf Society Incorporated**

262 South Terrace, Adelaide SA 5000

Ph: (08) 8223 3335

Fax: (08) 8232 2217

TTY: (08) 8223 6530

Email: [info@deafcando.com.au](mailto:info@deafcando.com.au)

ABN: 32 798 351 192

**[www.deafcando.com.au](http://www.deafcando.com.au)**



Deaf CanDo is a member of CanDo Group Charities



Royal South Australian Deaf Society Inc.

Annual Report 2008/09



## **Mission**

**Deaf CanDo is part of CanDo Group Charities, our mission is to provide assistance to those who need help to achieve greater levels of independence and to help them strive to achieve their full potential.**

## **How can you support Deaf CanDo?**

Wills, Bequests and Legacies Tel: 8100 8237

Lotteries & Donations Tel: 8298 0959

Events & Sponsorship Tel: 8100 8237

[www.deafcando.com.au](http://www.deafcando.com.au)

Hearing Loss Solutions

Adelaide Tel: 8100 8209

Blackwood Tel: 8178 0022

[www.hearinglossolutions.com.au](http://www.hearinglossolutions.com.au)

## History

The Royal South Australian Deaf Society was established in 1891 by Mr Samuel Johnson and Mr Christopher Hawkins as The South Australian Deaf and Dumb Mission Inc. Since this time the organisation has undergone many name changes including The South Australian Adult Deaf and Dumb Society Inc; The Royal South Australian Deaf Society Inc; Deaf SA and now Deaf CanDo.

The need for a Deaf Society was first publicly expressed in early 1891 by Mr Samuel Johnson who at the time was the Superintendent of Townsend House Inc. As a result the President of the Institution, the Hon John Colton, held a meeting and a Mission for the social and religious welfare of adult Deaf and Dumb citizens in South Australia was established, and a committee was assigned to the management.

Following this a site was chosen on Wright Street in the city on which an establishment was built and opened in October 1895 – it was the first Institution of its kind opened in the Colonies. By 1920 the original property in Wright Street was too small for the Society's growing commitments and 262 South Terrace was purchased. The foundation stone was laid in 1927 on the current building and was opened by His Excellency, Sir Alexander Hore-Ruthven, in November 1928.

On September 11, 1986, 262 South Terrace was listed on the State Heritage List and has since undergone substantial renovations to preserve the historical building.

Today Deaf CanDo is the home of the Deaf community and consists of a large hall, clubrooms, chapel, meeting rooms and offices. Several Deaf Community Groups regularly use the facilities at 262 South Terrace including The Deaf Sports and Recreation Association of South Australia – DSRSA; Deaf Australia (SA); The Senior Citizens Group – SCG; The South Australian Deaf Women's Guild; The Adelaide Deaf Community Church (formally St James Church of the Deaf) and various sporting and interest groups.

## Contents

History	1
Chairman's Report	2
Management Report	3
Directors	6
Executive Team	6
Statement by the Board of Directors	7
Summarised Income Statement	8
Summarised Balance Sheet	9
Summarised Statement of Recognised Income and Expenditure	10
Summarised Cash Flow	11
Summarised Financial Information	12
Auditor's Report	14
Sponsors and Supporters	17

**Hearing loss can affect people at any age in our community. It can be present at birth, acquired through illness, accident, exposure to noise or as part of the normal ageing process.**



## Chairman's Report

I am pleased to present the Deaf CanDo 2008/09 annual report.

This year has been a very positive one for the organisation. There was a 19% growth in fundraising through lotteries, donations, our audiology clinics and events. This is an encouraging sign for the Deaf Society's capacity to provide the services that the members of our community want.

**Highlights** I would like to mention from this year were:

- 109,415 hours of interpreting support provided this year to 200 clients per month.
- More than 4,000 hours of support provided by Community Services to the Deaf and DeafBlind Community.
- More than \$400,000 raised through events and collections.
- More than 100 volunteers, volunteering more than 2,500 hours to various projects and events.
- The launch of the very successful Amazing Race Corporate Challenge.
- The launch of Hand Up – a regular giving program designed to increase long term donation income.

**Interpreting:** This year we remained the principal provider of interpreting services in the state, providing support to the Deaf and DeafBlind community. Each month our interpreters supported about 200 clients. This year, they had 4476 interpreting assignments (109,415 hours).

Our interpreters are highly trained and motivated. They are vital to the success of our interpreting service. I thank them for their dedication and passion.

We continue to be part of AFDS (Australian Federation of Deaf Societies). I am happy to announce that, in the next reporting period there will be a new National Interpreting Booking Service gateway. This will be launched in August 2009. This new service

will enable better and easier access for the Deaf community to interpreting at a national level.

**Community Services:** The Community Services team provided more than 4,000 hours of support this year to Deaf and DeafBlind members of our community. Our staff members are trained to provide 'tactile interpreting' / 'Relay interpreting' support to DeafBlind clients. The issues they face on a daily basis can be very complex. Our involvement is important to their overall health and wellbeing. I thank our staff members for their care, patience and understanding.

**Fundraising:** In October 2008 we held our first Amazing Race Corporate Challenge – raising an impressive \$88,000 for the organisation. This corporate event enables us to engage with the South Australian business community as well as raising much-needed funds. In 2009 we will join with CanDo4Kids to make this event bigger and better.

This year more than \$300,000 was raised through collections and \$27,000 was raised from our third Amazing Race Around Adelaide. In addition, Hands Up – a new regular giving program – was launched early in 2009. This will help increase income. Regular donations are vital for future planning of services to the community. I thank all of the fundraising team members for their work

**Hearing Loss Solutions (SA) Inc:** In 2005, we began Hearing Loss Solutions. We invested heavily in audiology equipment and staff. Our plan was to build a business that would make an income to support our services. I am pleased to say that our two clinics are doing well. They provide a good service, and they are making a financial contribution to services. I thank the audiologists and the staff.

**The "brand":** The Society is still, officially, The Royal South Australian Deaf Society Inc. I think most of us still talk about "The Deaf Society" or "Deaf SA". At the end of the last financial year, CEO Paul Flynn recognised the need to link us by name and symbol with the CanDo Group for joint marketing and fundraising. Deaf CanDo was created for that purpose. The use of this brand has helped in the success of marketing, promotional and fundraising activities.



**Our link with CanDo4Kids:** Up to the date of these reports, we have been part of the CanDo Group for 2.5 years. This coming-together was the result of courageous decisions by the Boards of both associations. More importantly, it was the result of the vision and leadership of Mr Barry Mackie and Mr Paul Flynn. We owe both of these men a great debt.

**The Deaf community:** I have the highest regard for the members of the Deaf community. It has always been a pleasure as well as a privilege to work

with you, I thank all our staff, volunteers and our volunteer board members for their contributions. I also thank our loyal supporters – with each donation you are making a difference to the lives of many Deaf and DeafBlind South Australians. We can't thank you enough.

Kevin Jolly  
Chairman



**As the interim CEO of Deaf CanDo I am pleased to present the report of the Executive Team for 2008/09. I acknowledge and thank all Board Members, Staff, Supporters and Volunteers of Deaf CanDo for their dedicated service.**

Grant Goodall - Acting CEO

## Management Report

Deaf CanDo (The Royal South Australian Deaf Society Inc.) operating under the management structure of CanDo Group Charities has improved the overall business and financial stability of the organisation.

Interpreting support and Community Services for the Deaf and hearing impaired community remains at the forefront of the organisation. Running a 24-hour Auslan (Australian Sign language) Interpreting Service we provided Interpreting to approximately 200 clients per month in 2008/09. In addition we also provided DeafBlind relay interpreters for DeafBlind members of the community – with the number of people requiring this interpreting service continually growing. Currently Deaf CanDo is the primary provider of interpreting services in the state undertaking 4476 interpreting assignments, equating to 109,415 hours of support this year to South Australia's Deaf, DeafBlind and hearing impaired community.

Auslan interpreting services are provided in many environments including; Education/Tertiary Sectors; Police/Courts; Medical including Public Hospitals; Weddings; Funerals; Conferences; Theatre performances and Workplace meetings.

Professional development of interpreters is a key focus at Deaf CanDo. This year four interpreting staff members attended the annual ASLIA (Australian Sign Language Interpreter Association) National conference held in Darwin in September 2008. In addition our interpreters also attended the following workshops:

- Auslan Interpreting Mental Health Field
- Ethics Workshop
- Understanding the Legal System

Collaborating with AFDS (Australian Federation of Deaf Societies) partners, this year Deaf CanDo established a new National Interpreting Booking Service gateway which will be launched in August 2009. This new service is a positive move forward as Deaf Societies work together to best meet the interpreting needs of today's Deaf community.



One in five Australians over the age of 15 have some degree of hearing impairment.

## Learning Auslan

The Auslan (Australian Sign Language) Information area runs the Talking Hands series for hearing people to learn Auslan at a basic level. In addition once again we also undertook Auslan classes for workplaces including The Department of Health, Safe Work SA, the Aboriginal Land Corporation and several schools.

The annual Auslan camp for people wanting to develop their sign language, was held in November 2008 and was a great success, with more than 100 participants attending the two-day camp at Wellington. Started in 1990, the camps provide a great opportunity for participants to quickly improve their Auslan skills while experiencing the Deaf culture and interacting with the Deaf community.

## Community Services

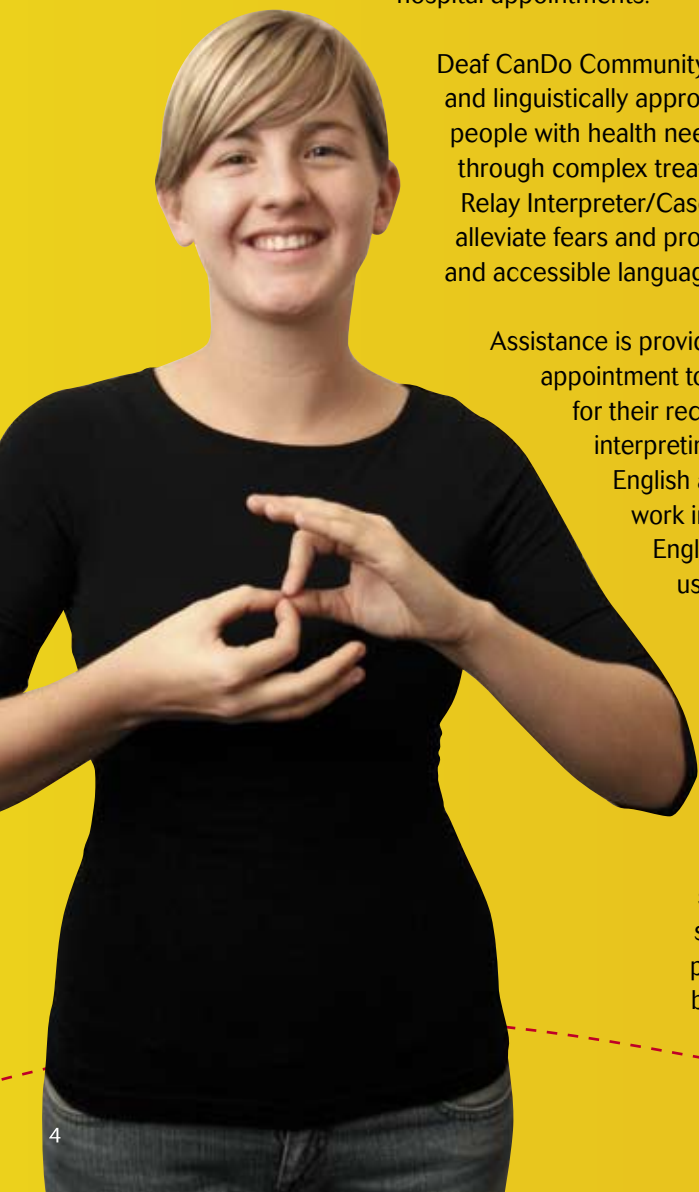
Our Community Services team provide culturally and linguistically appropriate services to Deaf and DeafBlind South Australians in need, ranging widely in age and needs, of which Deaf seniors make up an increasing number. This year the Deaf CanDo Community Services team provided more than 4,000 hours of support to Deaf and DeafBlind persons in South Australia.

As our client group ages, the complexity of their needs also increase with many Deaf clients experiencing problems with their vision and/or a decline in their general health. This compounds their communication issues and access to information. Clients who are DeafBlind, physically impaired or who may have severe mental health issues, often require practical assistance to attend their medical and hospital appointments.

Deaf CanDo Community Services currently has significant responsibility for providing cultural and linguistically appropriate intervention and support services to Deaf and DeafBlind people with health needs. Support at medical appointments, during hospital stays and through complex treatment regimes often require not only an Auslan Interpreter but a Relay Interpreter/Case Worker to de-brief with clients following these appointments, alleviate fears and provide important information and instructions in the most appropriate and accessible language.

Assistance is provided by case workers to ensure clients are supported throughout the appointment to fully understand the implications of their illness and/or instructions for their recovery. Case workers are trained to provide 'tactile interpreting'/'Relay interpreting' support to our DeafBlind clients and clients who have both poor English and Auslan (Australian Sign Language) skills. Deaf Relay Interpreters work in tandem with Auslan Interpreters. The Auslan interpreter interprets an English-speaker's message into standard Auslan, then the relay interpreter uses a specific or combination of communication methods/language to convey that message to the DeafBlind client. The system works in reverse when the DeafBlind client expresses themselves.

Without the support and assistance of Deaf CanDo's Community Services to: monitor the progress of Deaf seniors with high needs in their homes; advocate for their right to access essential language support in hospitals and at medical appointments; and to provide a wide range of information and practical assistance services such as shopping support, budget maintenance and social support etc. clients could be placed 'at risk' of injury, untreated health problems and of developing additional mental health issues brought on by isolation.



## Hearing Loss Solutions SA

Since its inception in 2005 Hearing Loss Solutions SA continues to grow and remains the only not-for-profit audiology service in South Australia, with all surpluses assisting in the provision of services to the Deaf and hearing impaired community. In addition we remain one of only a handful of clinics not directly aligned with a hearing aid manufacturer.

HLS SA has two clinics – one on South Terrace in the city and the second on Main Road at Blackwood. This year we welcomed more than 400 new clients, helping us to generate income to help support services to South Australia's Deaf and hearing impaired community.

In addition HLS SA also introduced the Active Communication Education (ACE) Classes, a group training program designed to help people with hearing impairments to become more effective communicators in every day life. This step by step program offers guidance and strategies that are designed to:

- Improve the person's communication abilities
- Reduce hearing difficulties
- Improve the person's quality of life

## Income Development

In October 2008 we saw the launch of our first Amazing Race Corporate Challenge (developed by Deaf CanDo) - an interactive, fun, entertaining and team-building fundraising event.

Teams competed in the two-day event racing around the State testing their brains and brawn – raising \$88,000 for Deaf CanDo.

Geared to improve communication, encourage teamwork, build self-esteem through achievement, highlight special skills, develop team spirit, build moral within the workplace and create networking opportunities, the Amazing Race Corporate Challenge engaged and inspired team members and their colleagues.

There were two race prize categories including Highest Fundraiser and Overall Event Winner. In 2008 the highest fundraiser raised more than

\$12,000 for Deaf CanDo. This event was a major highlight for the organisation increasing profile while developing an innovative way of developing relationships with business and increasing fundraising income.

In addition on Sunday, March 29 we held the third annual Amazing Race Around Adelaide which raised more than \$27,000 for Deaf CanDo. With more than 50 teams involved the one-day event was a great success and we look forward to building on this in 2010.

The Collections program again made a considerable contribution to the income received this year, resulting in more than \$300,000 raised for Deaf CanDo. The dedicated collections team also help to raise the awareness and profile of Deaf CanDo with their position at supermarkets and shopping districts.

Donation and lottery campaigns for Deaf CanDo were strong this year. In addition we also launched a new regular giving program – Hand Up – to help increase income into the organisation today and into the future. Our supporters are an integral part of our organisation and regular donations through our Hand Up program are vital for future planning of services to the community. Guaranteeing regular and predictable funds allows us to make solid commitments to the community in addition to decreasing the expenses of our fundraising, meaning we can put more funds into programs.

Volunteers continued to play an integral part of Deaf CanDo this year, volunteering more than 2,500 hours to various projects including both Amazing Race events. Volunteers are essential in helping us to achieve the mission of Deaf CanDo to support Deaf and hearing impaired South Australians.

Thank you to all our supporters for your unwavering contribution to Deaf CanDo. Donations, sponsorship, bequests & legacies, volunteering and more all play their part in supporting our work with South Australia's Deaf and hearing impaired community.

**Deaf CanDo Management Team**



Half the population aged between 60 and 70 have a hearing loss.



# Directors

The names of board members who have held office during the financial year are:



**Mr K Jolly - Chairman**  
Graduation Certificate (Baptist Theological College of New South Wales), B.A. (South Africa), B.D. (Hons) London, M.A. (Macquarie), LL.B, (Adelaide), G.D.L.P. (Uni. South Australia)



**Mr J Hoopmann - Director**  
B.Th. is Bachelor of Theology. GradDipMin is Graduate Diploma of Ministry. Commenced 2007.



**Associate Professor C Palmer - Deputy Chairman**  
PhD., M.Ed Management, M.Spec Ed., B.Ed., B.Spec Ed., Dip.T.(Primary), T.C., MACE



**Mr B Cooper - Director**  
Dip App. Chem., CAHRI  
Human Resource Manager, Adelaide Aqua Board Member and Past Chairman - Inner West Business Enterprise Centre



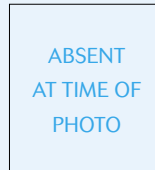
**Mr N Clifford - Treasurer**  
FCA, BCom, Masters of Economics.



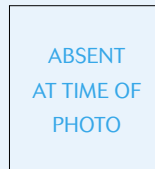
**Ms Briony Willoughby - Director**  
Executive General Manager  
Group Operations  
Graduate Certificate Management



**Mr A Sandon - Director**  
Alan is a general builder operating his own business, was founder of Australia Deaf Basketball association and won South Australia Association of the Deaf achiever's award in 1994. Commenced on the DeafCanDo board in 2007. Commenced 2007.



**Mrs M Phillips - Director**  
Bachelor Teaching, Bachelor Special Ed, Masters Special Ed, Certificate of Auslan  
Commenced 2007.



**Mr K Jacob - Director**  
Dip. Information Systems  
Commenced 2007.

# Executive Team



**Briony Willoughby**  
Executive General Manager  
Group Operations



**Claire Cotton**  
Executive General Manager  
Community Services



**Heidi Limareff**  
Principal Audiologist



**Alma Van Den Berg**  
Chief Financial Officer



**Mark Datta**  
Chief Information Officer



**Heather Loades**  
General Manager  
Communication Services

## Statement by the Board of Directors

The directors have determined that the Association is not a reporting entity and that this special purpose financial report should be prepared in accordance with the accounting policies outlined in Note 1 to the financial statements.

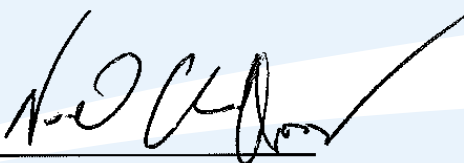
In the opinion of the Board of Directors:

1. The attached summarised financial report comprising the Income Statement, Balance Sheet, Statement of Recognised Income and Expenditure, Cash Flow Statement and the attached note 1 Presents fairly the results of the operations of the Association for the twelve months ended 30 June 2009 and the state of affairs of the Association as at 30 June 2009.
2. At the date of this statement, there are reasonable grounds to believe that the Association will be able to pay its debts as and when they fall due.

This statement is made in accordance with a resolution of the Board of Directors and is signed for and on behalf of that Board.

Dated this **27** day of October 2009.

  
Chairperson

  
Treasurer



## Summarised Income Statement for the year ended 30 June 2009

	2009 \$	2008 \$
Sale of goods	913,212	928,563
Cost of Goods sold	(350,858)	(387,594)
	562,354	540,969
Other Revenue from ordinary activities	2,263,305	2,216,023
Administration Expenses	(238,761)	(213,471)
Depreciation and amortisation expenses	(102,080)	(110,130)
Employee Expenses	(1,580,115)	(1,405,955)
Interest	(4,064)	(9,125)
Loss on Sale of Asset	-	(14,746)
Lottery prizes	(109,393)	(371,922)
Motor vehicle costs	(20,503)	(15,229)
Special Events	(63,976)	(39,299)
Other expenses from ordinary activities	(558,282)	(508,500)
	148,485	68,615
Profit from ordinary activities	148,485	68,615

# Summarised Balance Sheet for the year ended 30 June 2009

	2009 \$	2008 \$
<b>ASSETS</b>		
<b>CURRENT ASSETS</b>		
Cash and Cash Equivalents	483,363	447,664
Trade and Other Receivables	262,008	317,895
Inventories	29,417	31,581
<b>Total Current Assets</b>	<b>774,788</b>	<b>797,140</b>
<b>NON CURRENT ASSETS</b>		
Financial Assets	49,500	49,500
Other Financial Receivables	97,465	97,465
Property, Plant and Equipment	2,030,148	2,127,421
<b>Total Non Current Assets</b>	<b>2,177,113</b>	<b>2,274,386</b>
<b>TOTAL ASSETS</b>	<b>2,951,901</b>	<b>3,071,526</b>
<b>LIABILITIES</b>		
<b>CURRENT LIABILITIES</b>		
Trade and Other Payables	332,501	477,918
Short Term Financial Liabilities	-	85,042
Short Term Provisions	167,445	231,539
<b>Total Current Liabilities</b>	<b>499,946</b>	<b>794,499</b>
<b>NON CURRENT LIABILITIES</b>		
Long Term Financial Liabilities	-	-
Long Term Provisions	33,722	7,279
<b>Total Non Current Liabilities</b>	<b>33,722</b>	<b>7,279</b>
<b>TOTAL LIABILITIES</b>	<b>533,668</b>	<b>801,778</b>
<b>NET ASSETS</b>	<b>2,418,233</b>	<b>2,269,748</b>
<b>EQUITY</b>		
Reserve	1,712,297	2,705,042
Retained Earnings /(Accumulated Losses)	705,936	(435,294)
<b>TOTAL EQUITY</b>	<b>2,418,233</b>	<b>2,269,748</b>



## Summarised Statement of Recognised Income and Expenditure for the year ended 30 June 2009

	Reserves	Retained Earnings (Accumulated Losses )	Total
	\$	\$	\$
<b>Balance at 1 July 2007</b>	2,705,042	(503,909)	2,201,133
Changes in equity	-	-	-
Operating profit for 2008	-	68,615	68,615
<b>Balance at 30 June 2008</b>	2,705,042	(435,294)	2,269,748
<b>Balance at 1 July 2008</b>	2,705,042	(435,294)	2,269,748
Transfers to and From Reserves	(992,745)	992,745	-
Changes in equity	-	-	-
Operating profit for 2009	-	148,485	148,485
<b>Balance at 30 June 2009</b>	1,712,297	705,936	2,418,233

# Summarised Cash Flow Statement for the year ended 30 June 2009

	2009 \$	2008 \$
<b>CASH FLOW FROM OPERATING ACTIVITIES</b>		
Receipts from customers	2,959,377	2,665,466
Payments to suppliers, employees and others	(3,228,067)	(2,672,714)
Interest received	3,589	3,867
Grants received	411,496	423,960
Net GST received from/(paid to) ATO	(16,783)	(4,863)
Finance costs paid	(4,064)	(9,125)
	<hr/>	<hr/>
Net cash flows from operating activities	125,548	406,591
	<hr/>	<hr/>
<b>CASH FLOW FROM INVESTING ACTIVITIES</b>		
Payments for investments	-	-
Proceeds from investments	-	-
Payments for property, plant & equipment	(4,807)	(69,798)
Proceeds from property, plant & equipment	-	21,821
	<hr/>	<hr/>
Net cash flows (used in) investing activities	(4,807)	(47,977)
	<hr/>	<hr/>
<b>CASH FLOW FROM FINANCING ACTIVITIES</b>		
Proceeds from borrowings	-	20,895
Repayment of borrowings	(85,042)	(19,502)
	<hr/>	<hr/>
Net cash flows (used in) / from financing activities	(85,042)	1,393
	<hr/>	<hr/>
Net increase in cash held	35,699	360,007
Cash at the beginning of the financial year	447,664	87,657
	<hr/>	<hr/>
Cash at the end of the financial year	483,363	447,664
	<hr/>	<hr/>



# Summarised Financial Information

## INCOME STATEMENT

A Review of the operations of the Association during the financial year shows that profit from ordinary activities has increased by \$79,870 or 116%, from \$68,615 in 2008 to \$148,485 in 2009.

Gross profit on sales, increase by \$21,385 from \$540,696 in 2008 to \$562,354 in 2009.

During the 2008/9 financial year, Government Funding equated to \$411,496 and comprised recurrent funding of \$293,505 and project funding of \$117,991.

The remaining income of \$1,851,809 was from our Hearing Loss Solutions, fundraising and other activities.

Expenses decreased by \$11,203 from \$2,688,377 in 2008 to \$2,677,174 in 2009.

## BALANCE SHEET

Royal South Australian Deaf Society's net assets increased by \$148,485 in 2009 to \$2,418,233. The increase reflects the operating surplus for 2009.

Total assets decreased by \$119,625 from \$3,071,526 in 2008 to \$2,951,901 in 2009.

Cash holdings increased by \$35,699, Trade and other receivables decreased by \$55,887, inventories decreased by \$2,164 and property, plant and equipment decreased by \$97,273

Total liabilities decreased by \$268,110 from \$801,778 in 2008 to \$533,668 in 2009.

Trade and other payables decreased by \$145,417, financial liabilities decreased by \$85,042 and provisions decreased by \$37,651.

Reserves of \$992,745 have been transferred to retained earnings in 2009.

## CASH FLOW STATEMENT

Net cash flows from operating activities in 2009 was \$125,548, compared to \$406,591 in 2008.

Receipts from customers increased by \$293,911 in 2009 and payments to suppliers, employees and others increased by \$555,353.

Net cash flows used in investing activities was \$4,807 in 2009 compared to \$47,977 in 2008.

This was represented by a decrease in payments for property, plant and equipment of \$64,991 and a decrease of proceeds from property, plant and equipment of \$21,821.

Net cash flows used in financing activities decreased by \$86,435 from a cash flow of \$1,393 in 2008 to cash flow used of \$85,042 in 2009. This was represented by a decrease in proceeds from borrowings of \$20,895 and an increase of repayments of borrowings of \$65,540.

Royal South Australian Deaf Society's cash increased by \$35,699 during the 2009 financial year.

## Summarised Financial Information cont.

### **Note 1 Basis of preparation for the summarised financial reports.**

The Summarised Financial Report has been prepared in accordance with the Australian Accounting Standards AASB 1039 Concise Financial Reports. The Financial Statements and specific disclosures required by AASB 1039 have been derived from the Association's full financial report for the financial year.

Other information included in the summarised financial report is consistent with the Association's full financial report. The Summarised Financial Report does not and cannot be expected to, provide as full an understanding of the financial performance, financial position and financing and investing activities of the Association as the full financial report.

The directors have prepared the Financial Statements on the basis that the Association is a non reporting entity, because there are no users dependant on general purpose Financial Reports. The financial report is therefore a special purpose financial report prepared in order to satisfy the Board of Directors' financial accountability requirements under the South Australian Associations Incorporation Act 1985 and the Association's constitution.

Royal South Australian Deaf Society Incorporated is a not for profit organisation providing services to deaf persons and the deaf community in South Australia, promoting public interest in the well-being of deaf persons and advocating on behalf of deaf persons and the deaf community.

Royal South Australian Deaf Society Incorporated is incorporated and domiciled in South Australia.

The Association's registered office and principal place of business is:

262 South Terrace  
Adelaide  
SA 5000

The Financial Report has been prepared in accordance with the mandatory Australian Accounting Standards applicable to Associations reporting under the South Australian Associations Incorporation Act 1985 and the significant accounting policies disclosed in the Association's full Financial Report, which the directors have determined are appropriate to meet the needs of Members.

The report is also prepared on an accruals basis and is based on historic costs and does not take into account changing money values or, except where specifically stated in the notes, current valuations of non-current assets.



# Independent Auditor's Report



## Scope

We have audited the summarised financial information of the Royal South Australian Deaf Society Incorporated, which comprises the balance sheet as at 30 June 2009, and the income statement, statement of changes in equity and cash flow statement for the year then ended, in order to express an opinion on it to the members.

### *Board's Responsibility for the Financial Report*

The Board members of the Royal South Australian Deaf Society Incorporated are responsible for the preparation and fair presentation of the financial report in accordance with Australian Accounting Standards including the Australian Accounting Interpretations and the Associations Incorporation Act (SA) 1985.

### *Auditor's Responsibility*

Our responsibility is to express an opinion on the summarised financial information based on our audit. We conducted our audit in accordance with Australian Auditing Standards. These Auditing Standards require that we comply with relevant ethical requirements relating to audit engagements and plan and perform the audit to obtain reasonable assurance whether the financial report is free from material misstatement. We have performed an independent audit of the full financial report of Royal South Australian Deaf Society Incorporated for the year ended 30 June 2009. Our audit report on the full financial report was subject to qualification for the reasons set out in the qualification paragraph below.

Our procedures in respect of the audit of the summarised financial information included testing that the information in the summarised financial information is consistent with the full financial report, and examination on a test basis, of evidence supporting the amounts, discussion and analysis, and other disclosure which were not directly derived from the full financial report. These procedures have been undertaken to form an opinion whether, in all material respects, the summarised financial information is presented fairly.

We believe that the audit evidence we have obtained is sufficient and appropriate to provide a basis for our audit opinion.

### *Independence*

In conducting our audit, we have complied with the independence requirements of the Australian professional accounting bodies.

## Independent Auditor's Report cont.

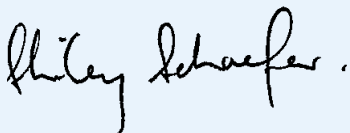
### *Basis for Qualified Auditor's Opinion*

As is common for organisations of this type, it is not practicable to maintain an effective system of internal control over donations and other fund raising activities until their initial entry in the accounting records. Accordingly, our audit in relation to donations and fund raising was limited to amounts recorded.

### *Qualified Auditor's Opinion*

In our opinion, except for the effects of such adjustments, if any, as might have been determined to be necessary had the limitation discussed in the qualification paragraph not existed, the financial report presents fairly, in all material respects, the financial position of Royal South Australian Deaf Society Incorporated as of 30 June 2009 and of its financial performance and cash flows for the year then ended in accordance with Australian Accounting Standards including the Accounting Interpretations.

**BDO Kendalls (SA)**  
Chartered Accountants



**Shirley Schaefer**  
Partner

Dated this 27<sup>th</sup> day of October 2009





# Sponsors and Supporters

## Major Supporters

AMP Foundation  
Bank SA Staff and Charity Foundation  
CMI Toyota  
Perry O'Brien Financial Services

## Amazing Race Supporters

Aces Bar & Bistro  
Adelaide Cricket Warehouse  
Adelaide Festival Centre  
Adelaide Fresh Glenelg  
Adelaide Guitar Festival  
Adelaide Shores Caravan Park  
Adelaide United  
Adventure Kayaking SA  
AMP Foundation  
Assaggio Restaurant  
Balfours  
BankSA  
Beach Woods Eco Tourist Park  
Bickford's Australia  
Blessed Cheese  
Bunnings Warehouse  
Bush Safari Co  
Capri Theatre  
Charlesworth Nuts Pty Ltd  
Chifley on South Tce  
CIBO Espresso Glenelg  
City of Adelaide Golf Club  
Cleland Wildlife Park  
Clem of Masondrina  
Coles  
Coopers Alehouse  
Crema on Jetty  
Department of Environment & Heritage  
Escape Travel  
Fasta Pasta Pulteney St  
Foodland  
Goodlife Modern Organic Pizza  
Grand Mecure Mount Lofty House  
Grand Medina Adelaide Treasury

Greenhills Adventure Park  
Gringos Mexican Cantina  
Gulfview Heights Primary School  
Hamilton Laboratories  
Hel-a-va Jet Boat  
Hoyts Cinemas  
Hyatt Regency Adelaide  
Independent Weekly  
Jacobs Creek Visitors Centre -  
(Orlando Wyndham Group)  
Kangaroo Island Marine Tours  
Knipsel Fruit Juices  
Lenzerheide Restaurant  
Mallyons on the Murray  
Bush Café & Gallery  
Mark Master  
McCues Bakery  
Mediterranean Café Ristorante  
Mecure Grosvenor Hotel Adelaide  
Mercury Cinema  
Mesa Lunga  
Mix 102.3  
Monarto Zoo  
Mount Lofty Summit Restaurant  
Mountain Fresh Juices  
Murray Goldburn  
Narnu Farm  
National Pharmacies Salisbury  
Next Generation  
Gym Health & Racquet Clubs  
Northern Light Theatre  
Old Tailern Town Historical Village  
Onboard Surf  
Palace Nova  
Rawsons Elite Appliances  
Ray and Julie Kairl  
Rock Solid Adventure  
Royal Adelaide Golf Club  
Saldechin  
Sammy's On The Marina  
SA Skydiving  
Simone Perele Lingerie

Sharyn Ridgewell  
Skycity Adelaide  
Solver Paints  
Stamford Grand Adelaide  
Star of Greece Café  
State Theatre Company  
Steam Ranger Heritage Railways  
Tai Chi & Chi Kung Institute of Australia  
Telstra  
Temptation Sailing  
The Beachouse  
The Chifley on South Terrace  
The Goose Gourmet Burger  
The Highway  
The Oakes Group  
The Wharf  
Tin Shed Café  
Video World  
Vmedia  
Waikerie Murray River Queen  
Wallis Cinema - Chelsea  
Wallis Theatres  
Wellington Courthouse  
Wishart Jewellers  
Woolworths  
Xdrill Challenge

